



PrecisionTM

PLS 24 PRO

CONCEALED MAGNETIC CATCH

Heavy Duty Concealed Magnetic Catch suitable for full size doors (e.g. wardrobe/cupboard, double internal doors).

- Can be used anywhere a roller/ball catch etc. would normally be fitted.
- As magnets don't touch (after installation)
 - the catch will never wear out!
 - Lifetime guarantee (for magnetism).
 - can be painted over.

- **No latch noise** when opening and shutting door (unlike a roller/ball catch)
- **Completely concealed** when door closed, no unsightly protruding strike plate lip (unlike a roller/ball catch).
- Can be used to help keep problem doors shut (e.g. with weak door closers, electric strikes, weak roller mortice locks, double sliding doors).

- **Quick and easy to install** - No chiseling required. Ezifit s/steel housing cup automatically sets the magnets perfectly parallel to each other, essential for precise power adjustment.

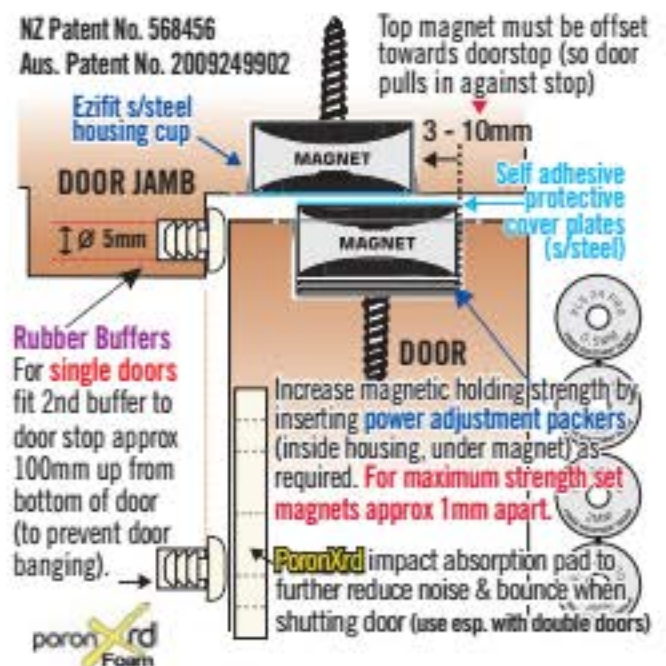
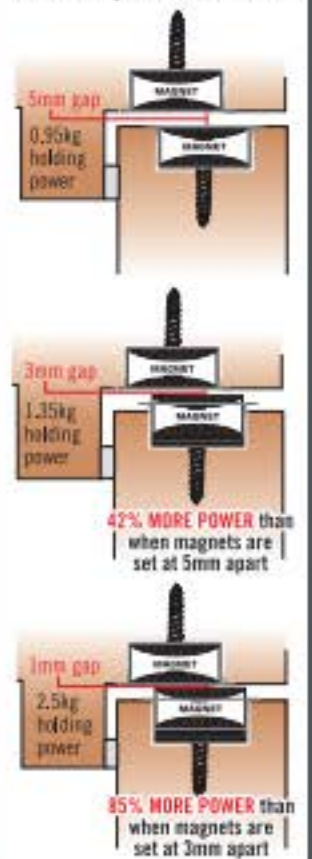
- **Power adjustment packers** increase magnetic holding strength by inserting power adjustment packers (inside housing, under magnet) as required. (See picture). Supplied in four sizes; 0.5mm - 3mm thick, for precise power adjustment.

- **Self Adhesive/Magnetic Cover Plate** (Brushed S/Steel)
 - Protects magnets from impact damage during installation.
 - Protects magnets from corrosion.
 - Conceals magnet and screw head for a more attractive finish.

- **Poron Xrd Foam impact absorption pad**
 - Use (esp. with double doors) to further reduce impact noise and bouncing of door on frame when shutting.
 - Low compression set - After impact, foam pad will return to its original thickness indefinitely.



Power Adjustment Guide:



Drill Ø23-24 mm holes approx 10mm deep into door and jamb to accept s/steel housing cups. (Recommended - Precision FB-23 Forstner Drill Bit)

DESIGNED AND ASSEMBLED IN NZ USING NZ MADE AND IMPORTED COMPONENTS.

Double Doors example (incl. poron Xrd Foam impact absorption pads).



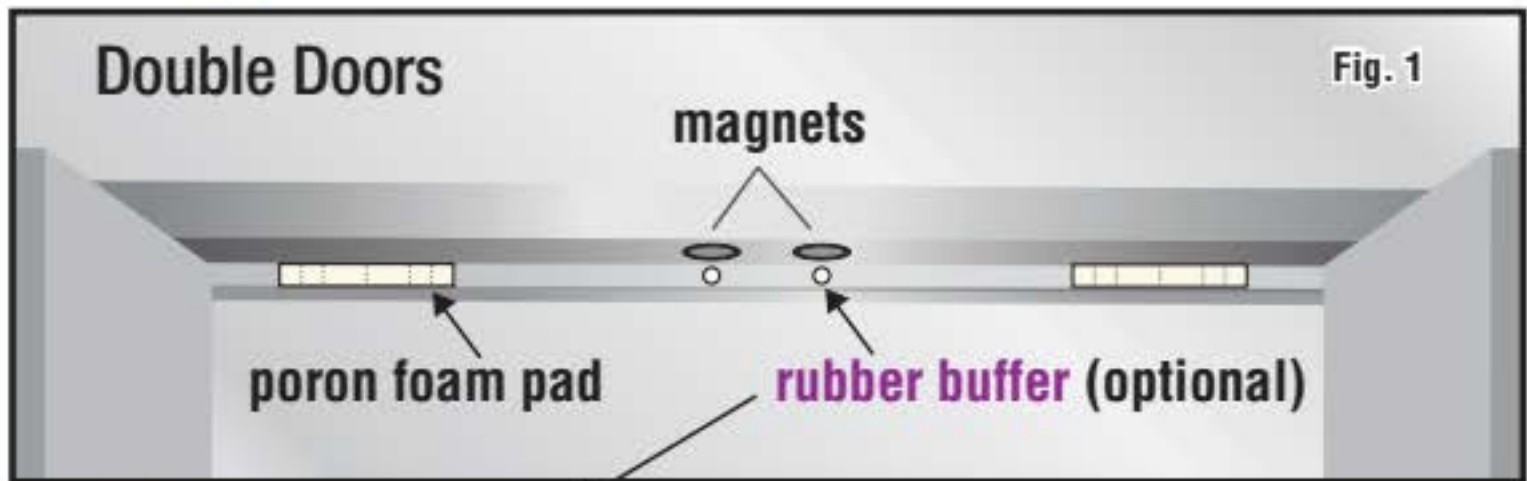
Top of door example (shown adjusted to maximum strength setting)



Sliding door example



Single door example



1. Set magnetic catch to maximum strength.



2. Remove **end segment** only of adhesive backing paper (see picture at bottom of card **Fig. 4**).

3. Affix foam pad onto doorstop - close to hinge end. (**Fig. 2**)

4. Reposition pad **incrementally** along doorstop - towards magnetic catch end until gap between door and frame (at magnetic catch end) has been reduced/increased to approx. 3mm (1/8") when closed. (**Fig. 3**)

5. Mark position, remove remaining backing paper from pad and affix to door stop.



Rubber buffer alternative option

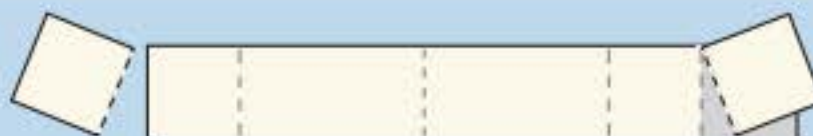
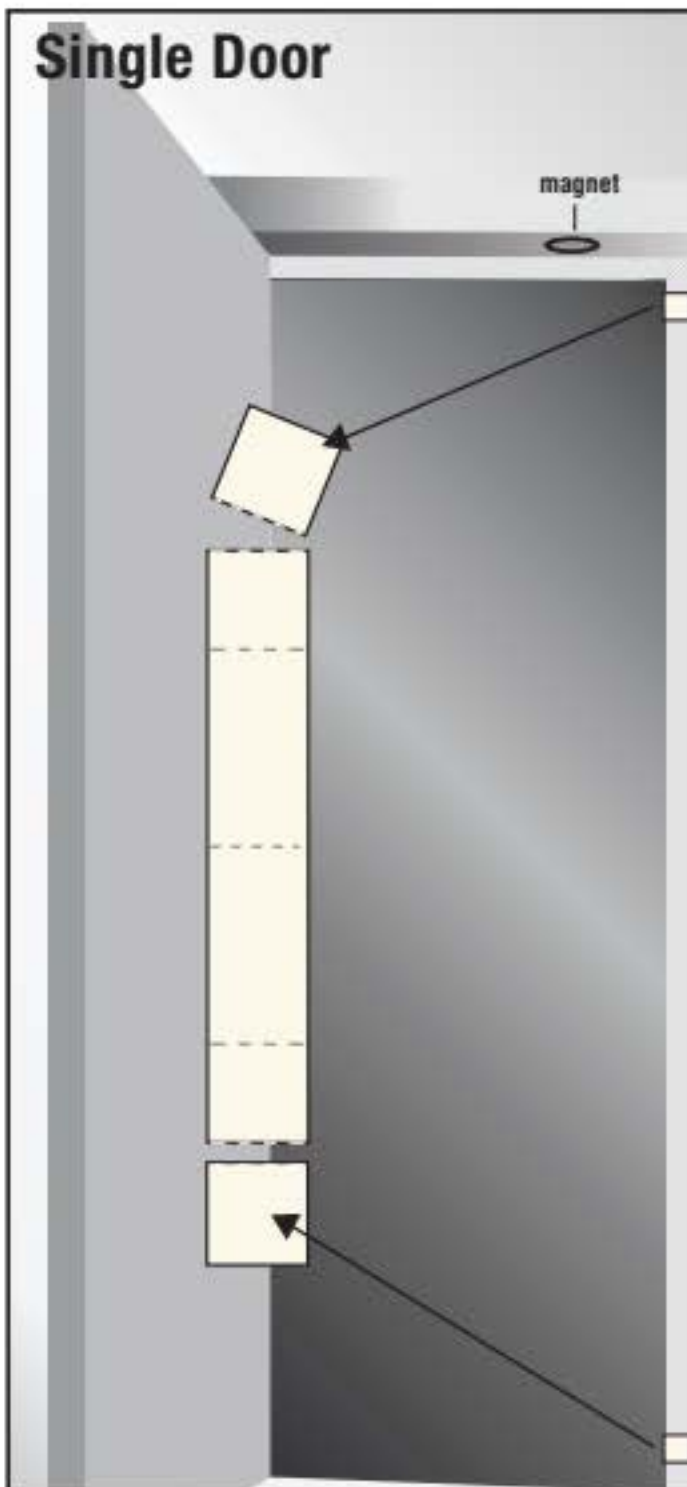
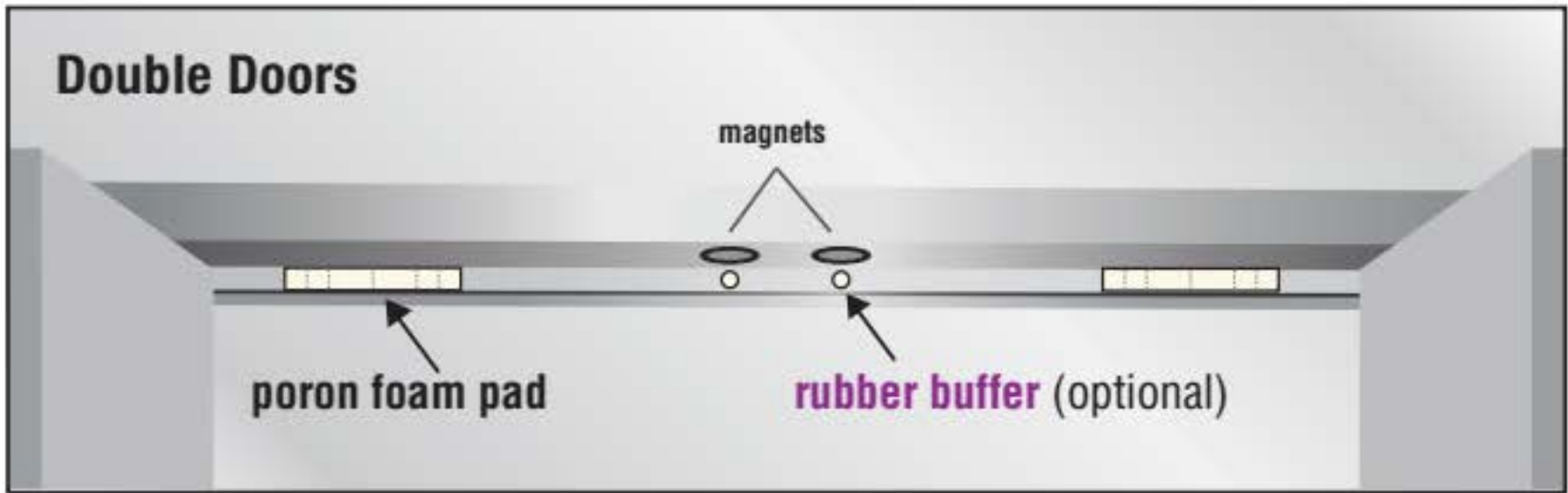


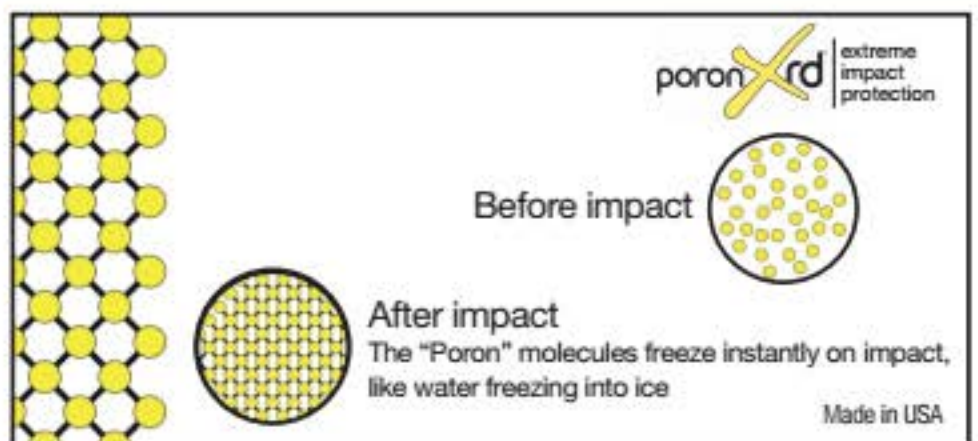
Fig. 4

Tear-away foam pad at perforated lines as required and affix to door stop - as an alternative to **drill-in rubber buffers** (see rear sticker of container for single/double door positioning details).



Poron Xrd Foam impact absorption pad

- Greatly reduces impact noise and bouncing of door on frame when shutting.
 - Low compression set - After impact, foam pad will return to its original thickness indefinitely.
 - Self adhesive backing - no drilling required.
 - Colour - off white.
- Modular design allows for the foam pad to be separated into smaller units - to suit a variety of applications (tear-away foam at perforated lines as required).





Postal address:
P O Box 99084, Newmarket
Auckland 1149, New Zealand

New Zealand:
Mobile: (0274) 844 769
After Hours / Fax: (09) 818 5769
Australia:
Free Phone / Fax: 1 800 658 241
Mobile: +64 274 844 769
Website:
www.precisionlockservices.com

PLS24PRO Concealed Magnetic Catch Limited Lifetime Warranty

- Precision Lock Services and its Authorised Distributors warrant to the Purchaser of the PLS24PRO Concealed Magnetic Catch that the components of this product shall be free from defects in material and workmanship for the life of the product.
- The Limited Lifetime Warranty will be valid, provided that the product is installed as per instructions and used for the purpose intended.
- The Purchaser's remedies shall be limited to the replacement of the PLS24PRO Concealed Magnetic Catch should there be a failure or defect in components, materials or workmanship.
- The PLS24PRO Concealed Magnetic Catch should suffer no substantial loss of magnetism, provided that the product has been used in the manner for which it was intended. Loss of magnetic strength due to abuse such as overheating, physical shock (including, but not limited to, allowing magnets to snap together during installation), electrical charge or exposure to moisture or corrosion is exempted from the Limited Lifetime Warranty. The determination of the cause of loss of magnetism, shall be solely at the discretion of Precision Lock Services.
- IN NO EVENT SHALL PRECISION LOCK SERVICES OR ITS AUTHORIZED DISTRIBUTORS, BE LIABLE FOR ANY OTHER DAMAGES, INCLUDING PHYSICAL HARM OF ANY KIND (WHETHER DIRECT, INDIRECT, FORSEEABLE, CONSEQUENTIAL OR INCIDENTAL) SUFFERED BY THE PURCHASER OR ANYONE ELSE ARISING OUT OF THE USE OF THE PLS24PRO CONCEALED MAGNETIC CATCH.
- THIS EXPRESS WARRANTY DISCLAIMS ALL OTHER WARRANTIES, GUARANTEES AND REPRESENTATION, EXPRESS OR IMPLIED.







